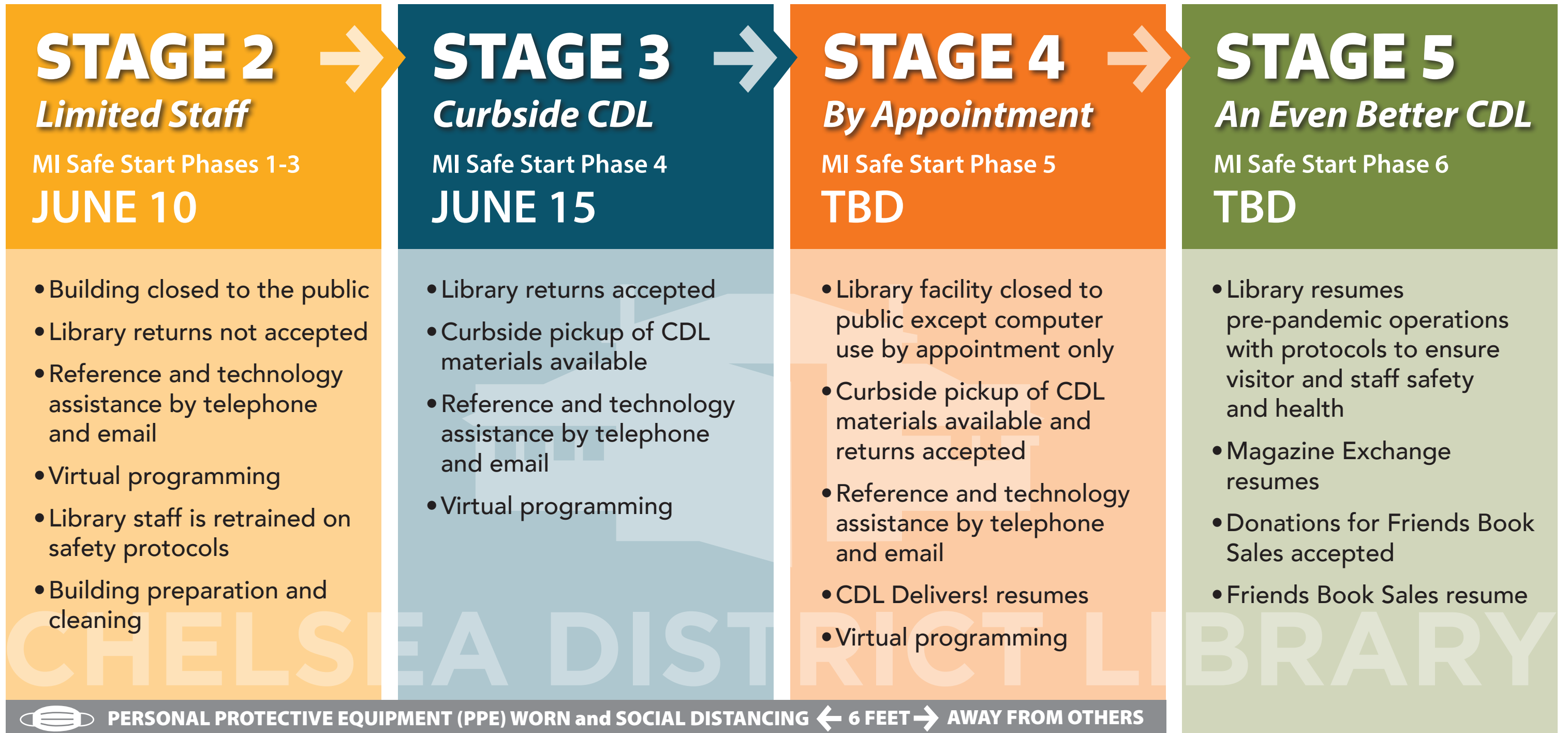


A Measured Plan for Reopening the Library

Your library misses you! When CDL closed we entered **STAGE 1**. Until we can meet again, please continue to take advantage of our reference service by telephone and email, our digital collections, and our virtual program offerings. *This framework is designed to be flexible, allowing for movement both forward and backward based on public health needs.*



As the State of Michigan anticipates a safe reopening, your library is also working to identify how we can safely provide services to our community. These plans are intrinsically tied to the phases of MI Safe Start: A Plan to Re-engage Michigan's Economy to ensure adherence to community health and safety standards. The plans are also informed by guidance from the CDC, MIOSHA, local government, the Washtenaw County Health Department, the American Library Association, the Library of Michigan, and the Michigan Library Association. Safely providing service to you will require staff training as well as proper and approved policies, plans, and practices in place to keep you and our staff safe and healthy.